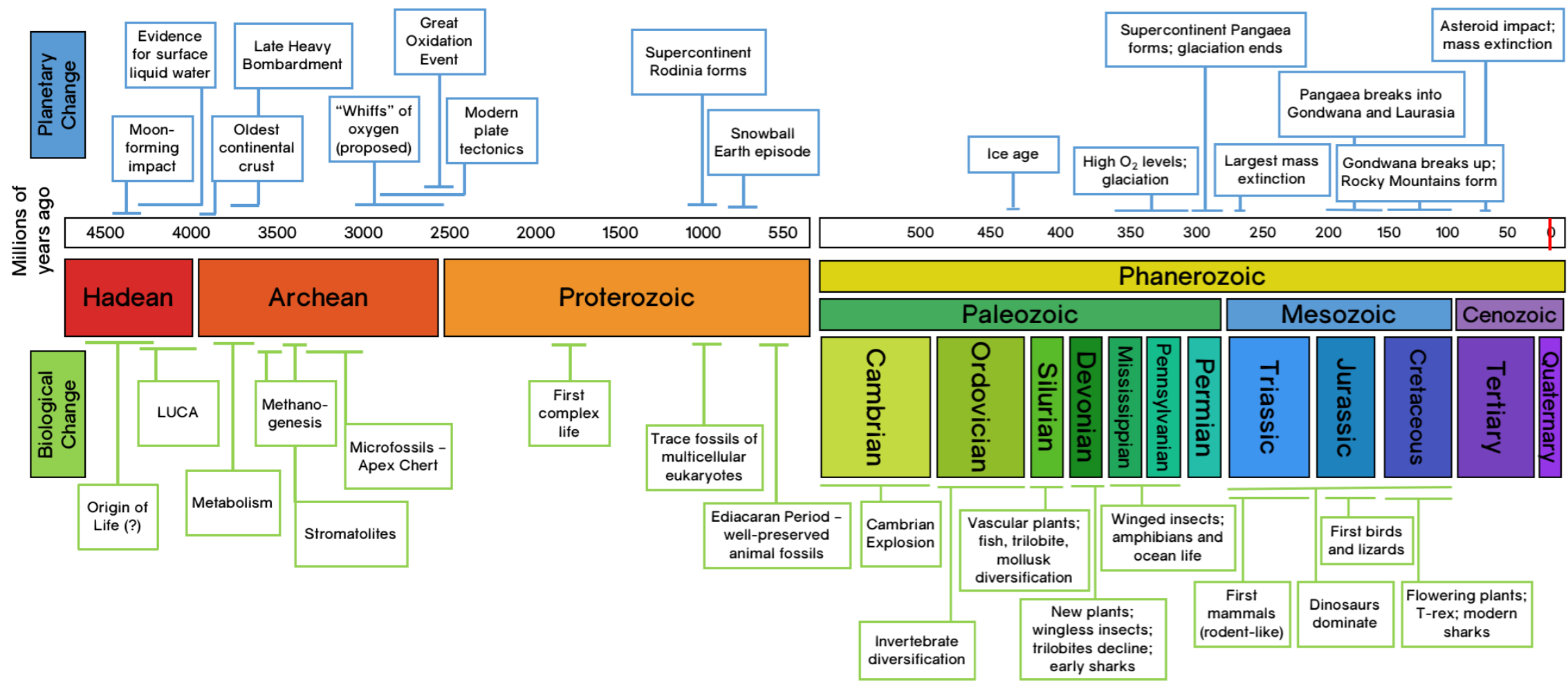


Knowledge of desired household waste separation (Competence Score) in the Republic of Ireland

Paul Delaney

History of Earth



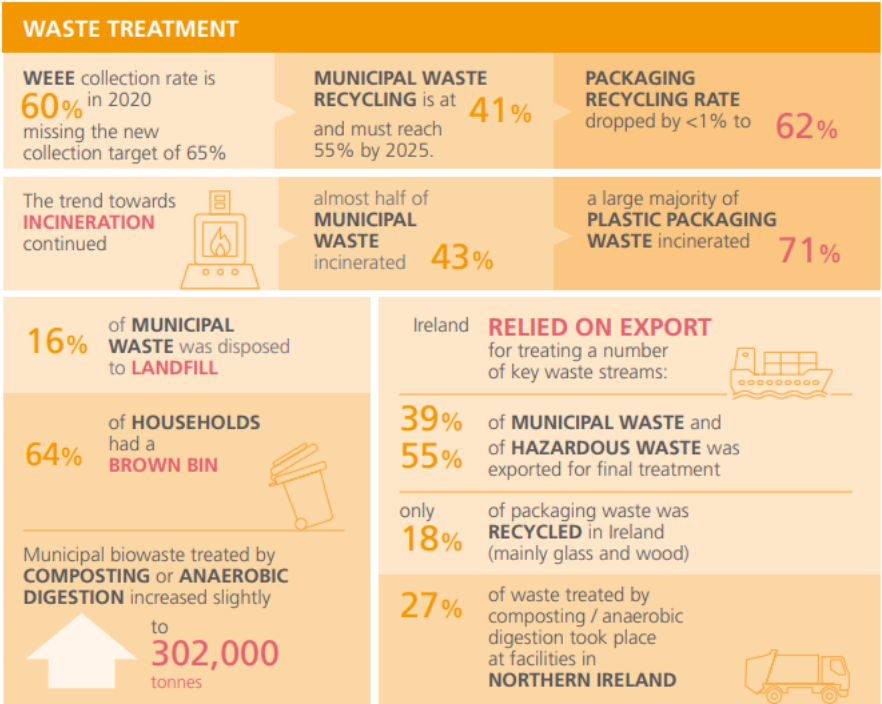
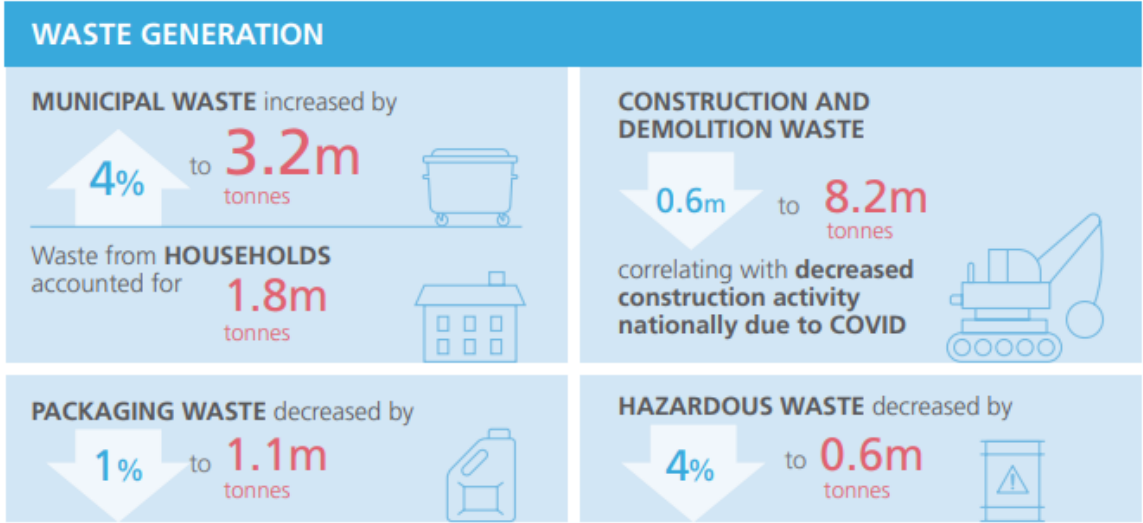


Kenneth E. Boulding

The economics of the coming spaceship earth

1966

EPA stats



Housing waste

household waste in Ireland in 2020 = 372 kg / person
+18.5% in 2 years

1.2M tonnes collected from our homes



59%

723,000
tonnes



22%

268,000
tonnes



16%

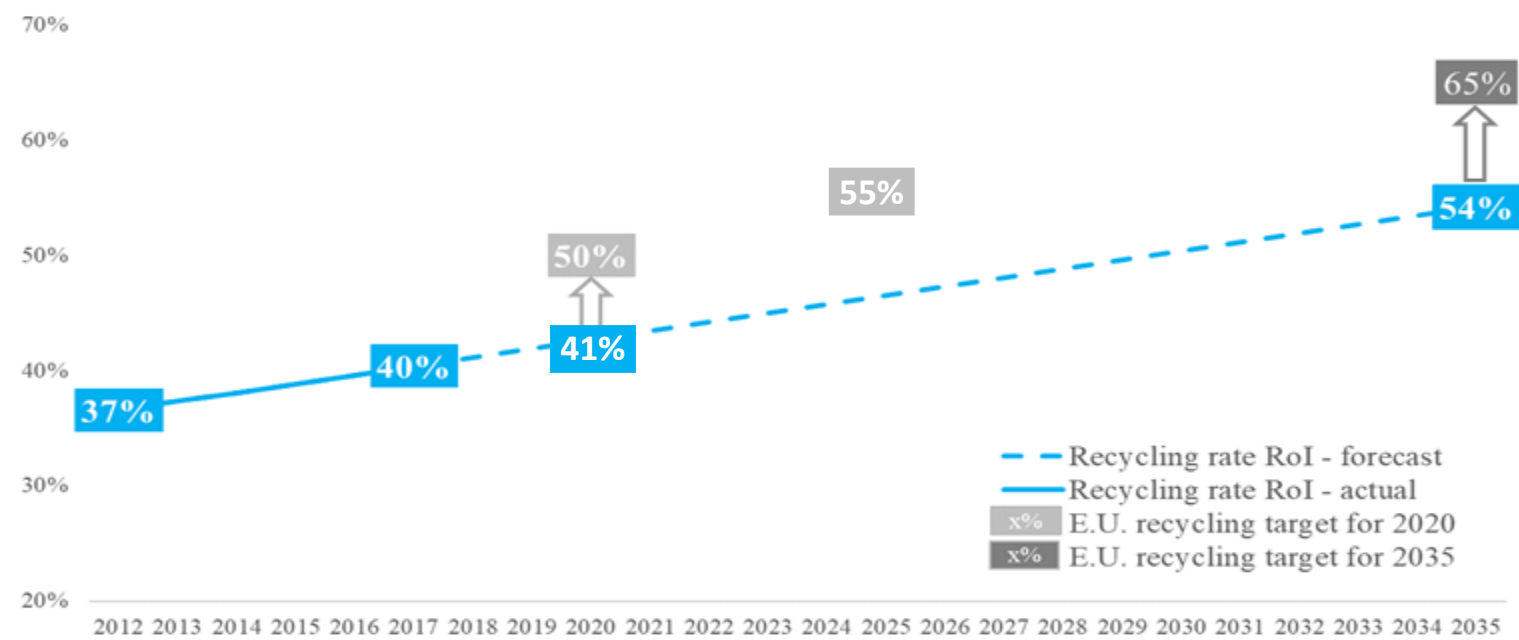
200,000
tonnes



3%

32,000
tonnes

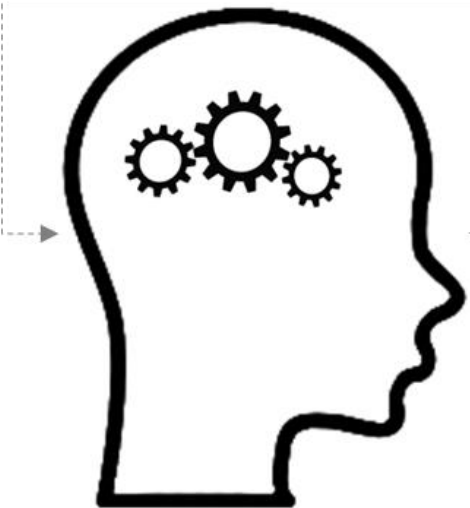
Recycling Rate and forecast against target – Rep. of Ireland



Intervention required to improve performance

Waste Separation decision tree

229
Types of items

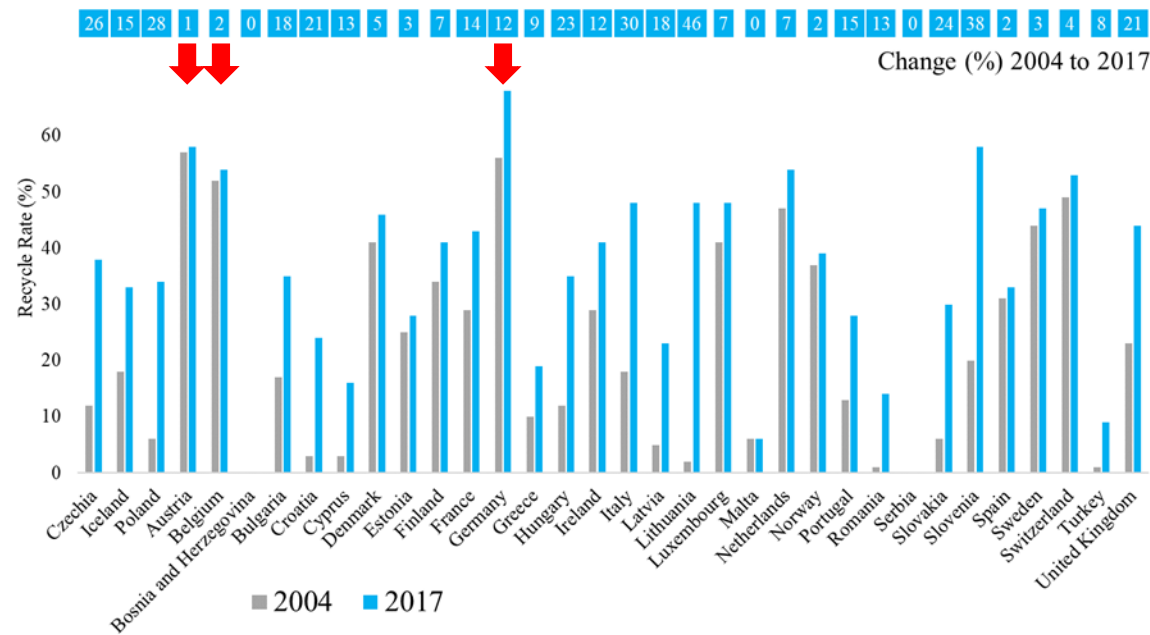


Waste disposal decision making has become complex. There are high expectations of a broad audience.

Rational for study – 3/3

Recycling Rate by country, 2004 & 2017

Source EEA 2019

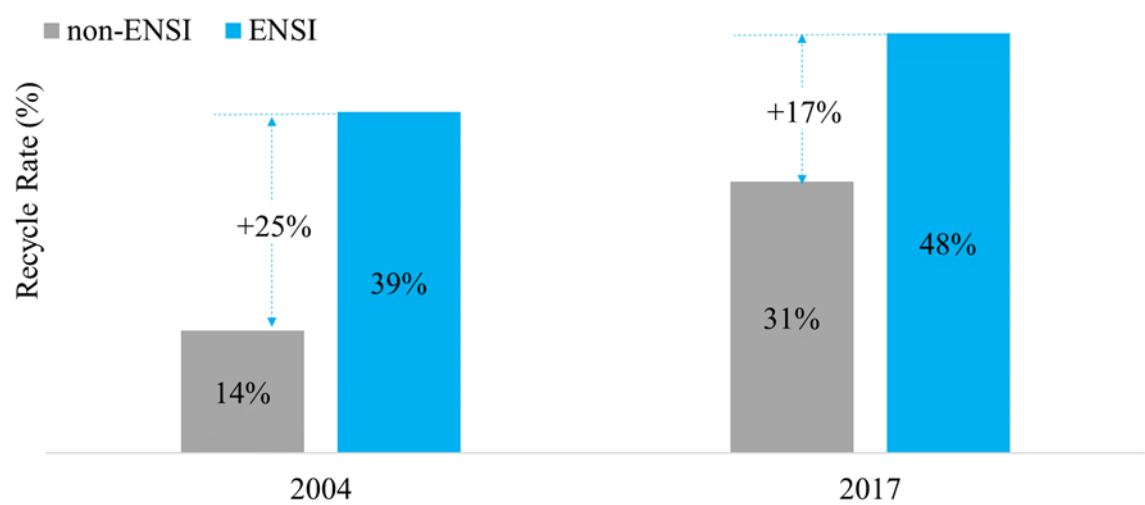


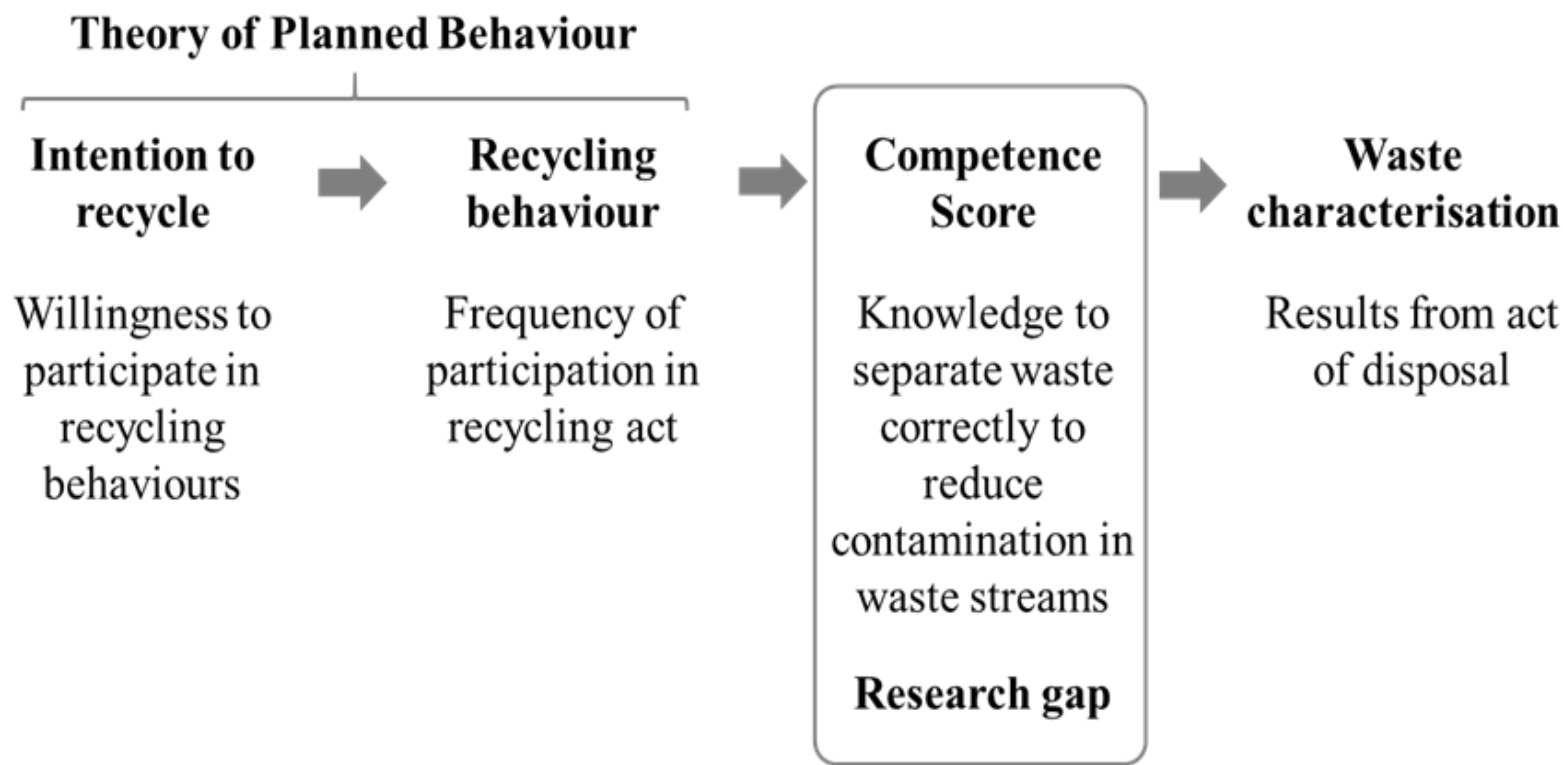
Across the E.U., ENSI participants had higher national recycling rates on average.

Austria and Belgium had hit 2020 target of 50% recycling in 2004.

Germany had hit 2035 target of 65% in 2017.

Recycling Rate by ENSI participation / not, 2004 & 2017





Method

- **Online questionnaire**
- **Random distribution via digital platforms to generate random sample**
- **Sample = 298**
- **Not nationally representative**
- **Analysis run in Microsoft Excel and IBM SPSS**

Competence Score

English

How do you dispose of a light bulb?
(tick all that apply)

☐ household recycling (green) bin

☐ WEEE drop off recycling point

☐ household general waste (black) bin

☐ civic amenity facility

☐ other (please specify)



Intention to Recycle (TPB)

"How likely are you to recycle your waste at home in the next 4 weeks?"
On a scale of 1 – 5 where 1 = strongly disagree; 5 = strongly agree.

Strongly disagree

Somewhat disagree

Neither agree nor disagree

Somewhat agree

Strongly agree

Knowledge sources

Did your primary school participate in the Green Schools Program?
Green Schools is a voluntary program run by An Taisce (government) to promote sustainability through schools which started in Ireland in 1997. The volume of participating schools increased over time.

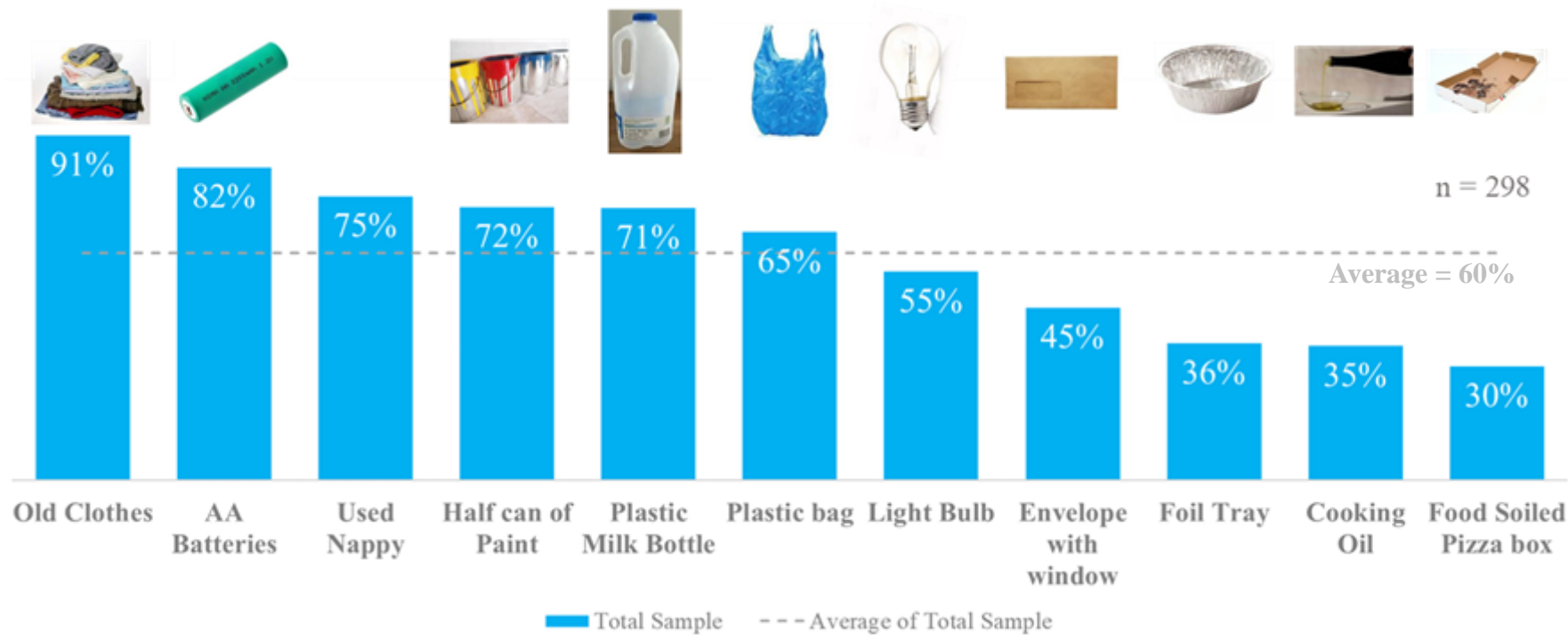
☐ Yes

☒ No

☐ Do not know / cannot recall

Findings – Competence Score

Competence Score by item



60% knowledge is

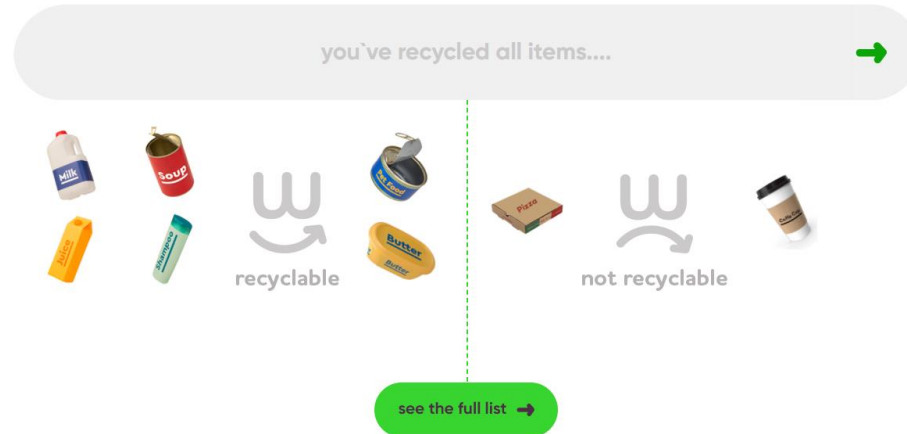
- Lower than that required to achieve targets**
- Insufficient to achieve circularity**

Points of Confusion

Pizza Boxes



MyWaste.ie – front page



MyWaste.ie – A to Z

If you have a take out pizza, be sure to scrape of any food waste and then the box can be placed in the recycle bin, you can put the scrapings in the food waste [brown] bin

Old Clothes

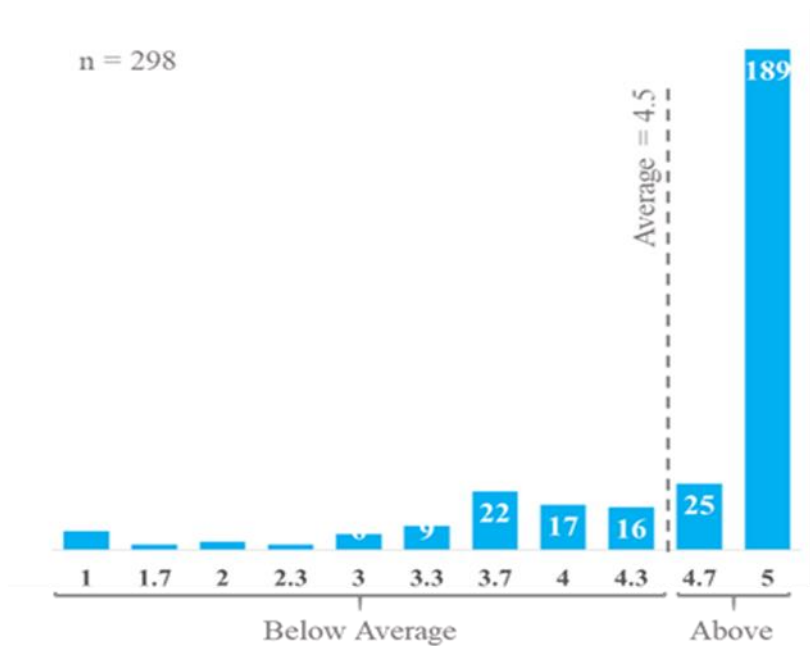


**EPA (2018) estimated that
45,000 tonnes of textiles
were disposed of
incorrectly.**

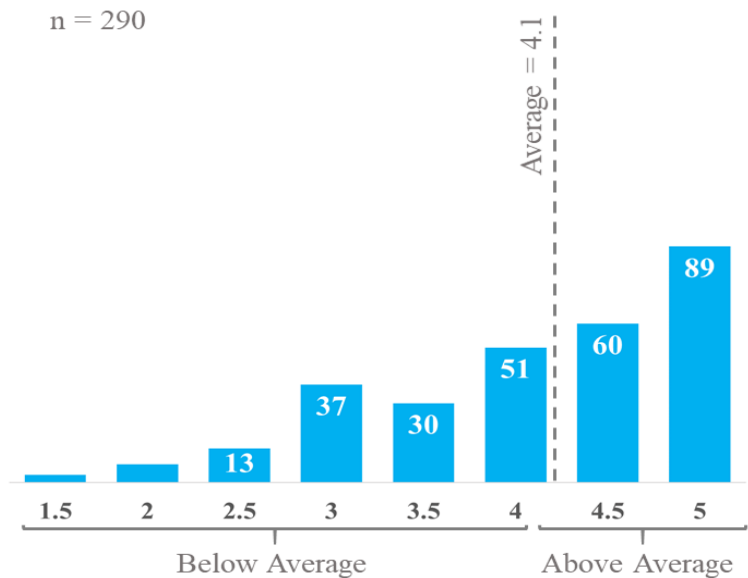
**Of 8 CAF's in Dublin area,
only Bray is flagged to
accept textiles.**

Findings – Theory of Planned Behaviour

Intention to Recycle



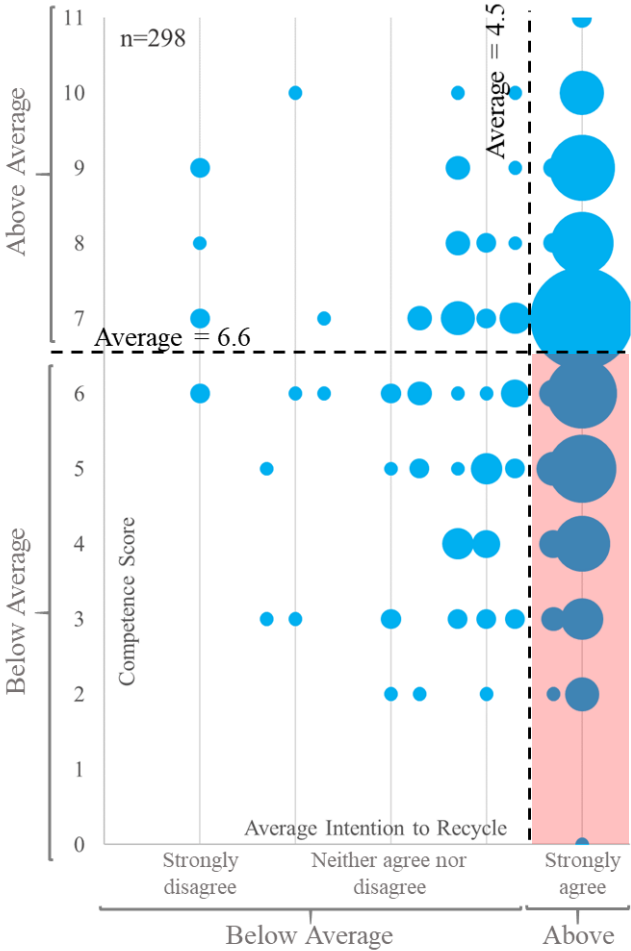
Recycling Behaviour



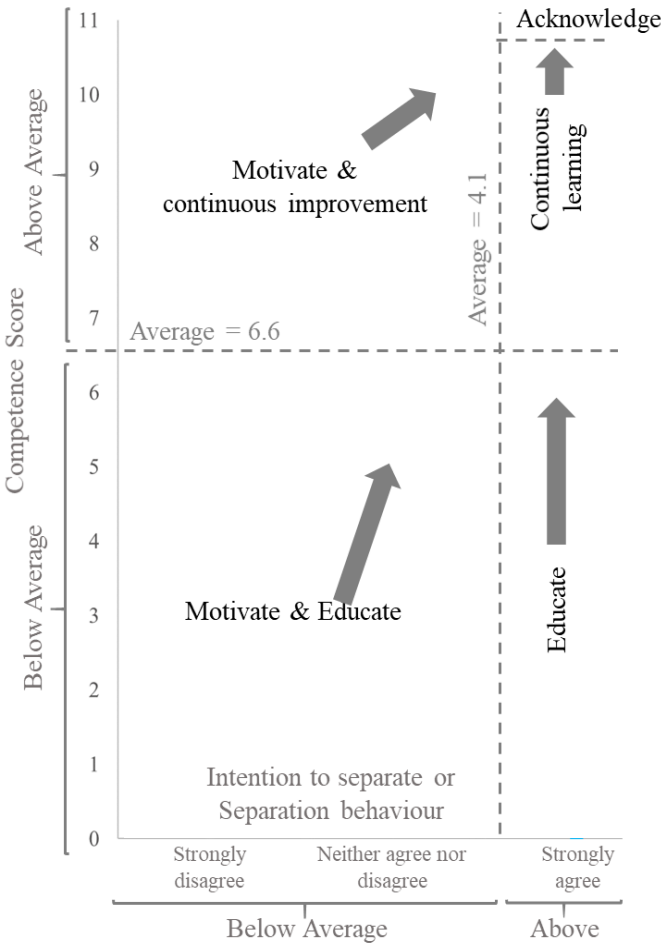
Respondents are enthusiastic about recycling and believe they recycle.

Findings – Combined

Competence Score and Intention to Recycle

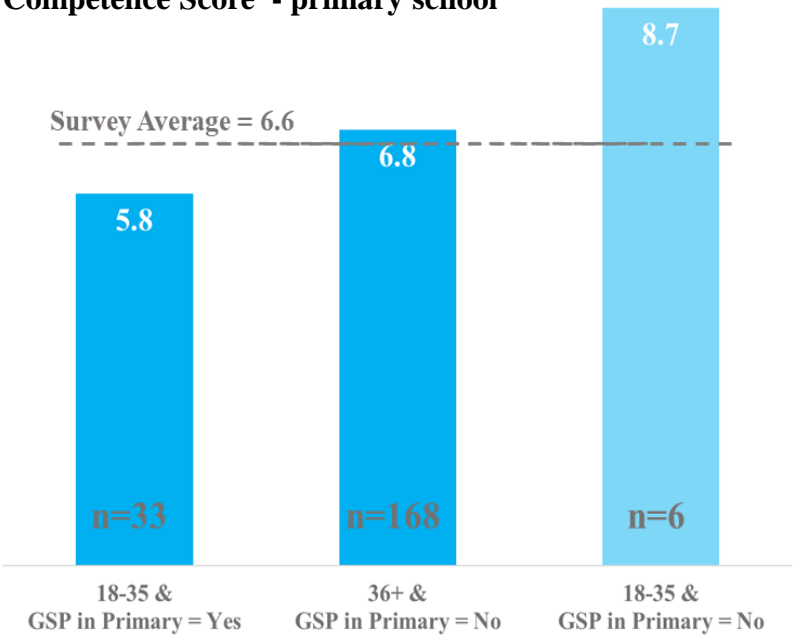


DDH Matrix (Desired Disposal Habits)

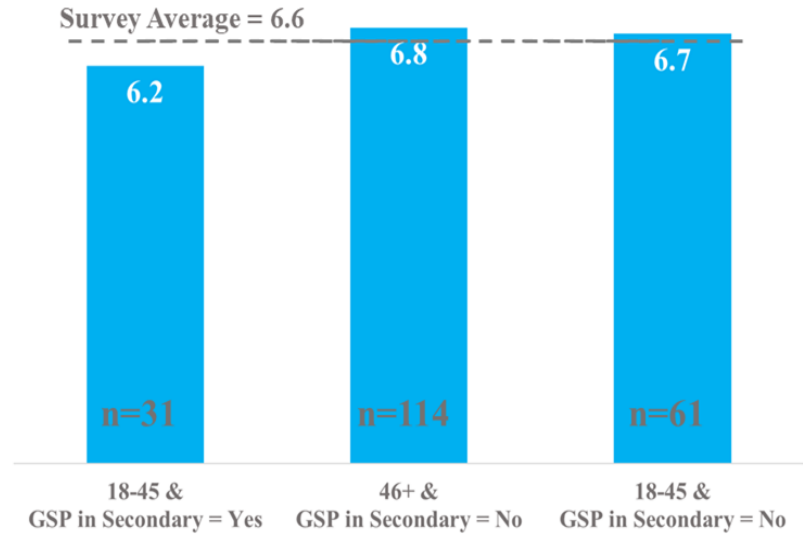


Competence Score – participation in the Green Schools Program

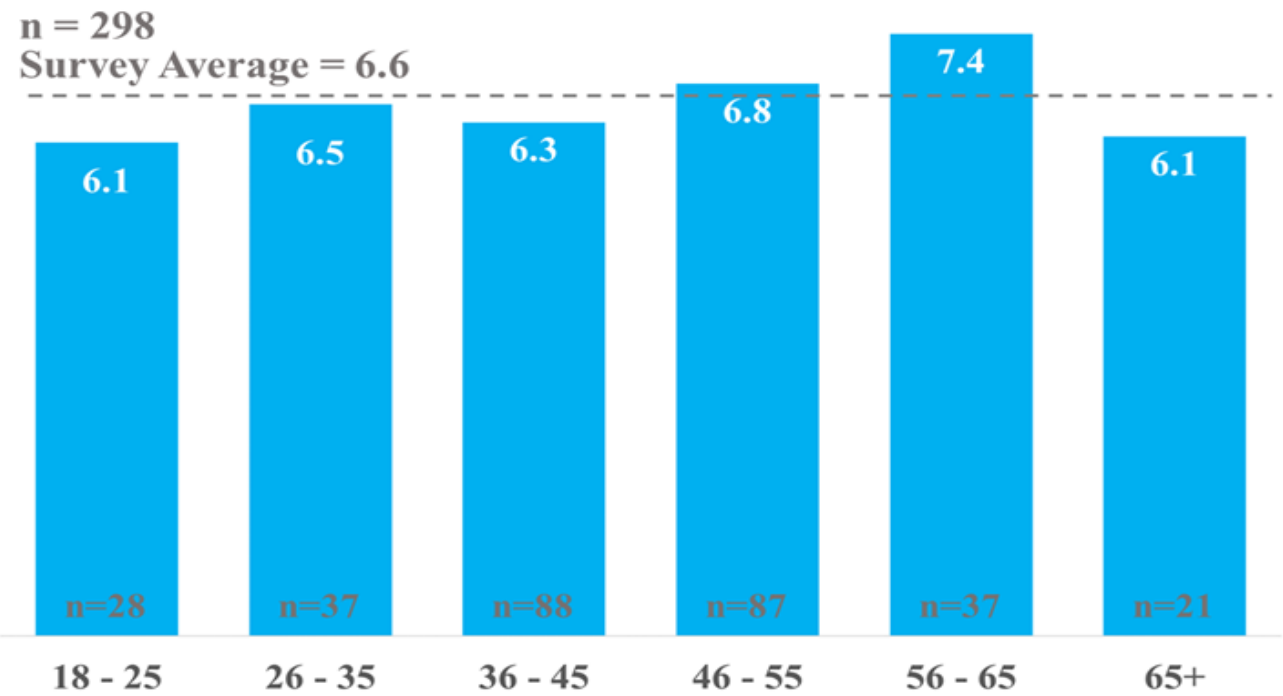
Competence Score - primary school



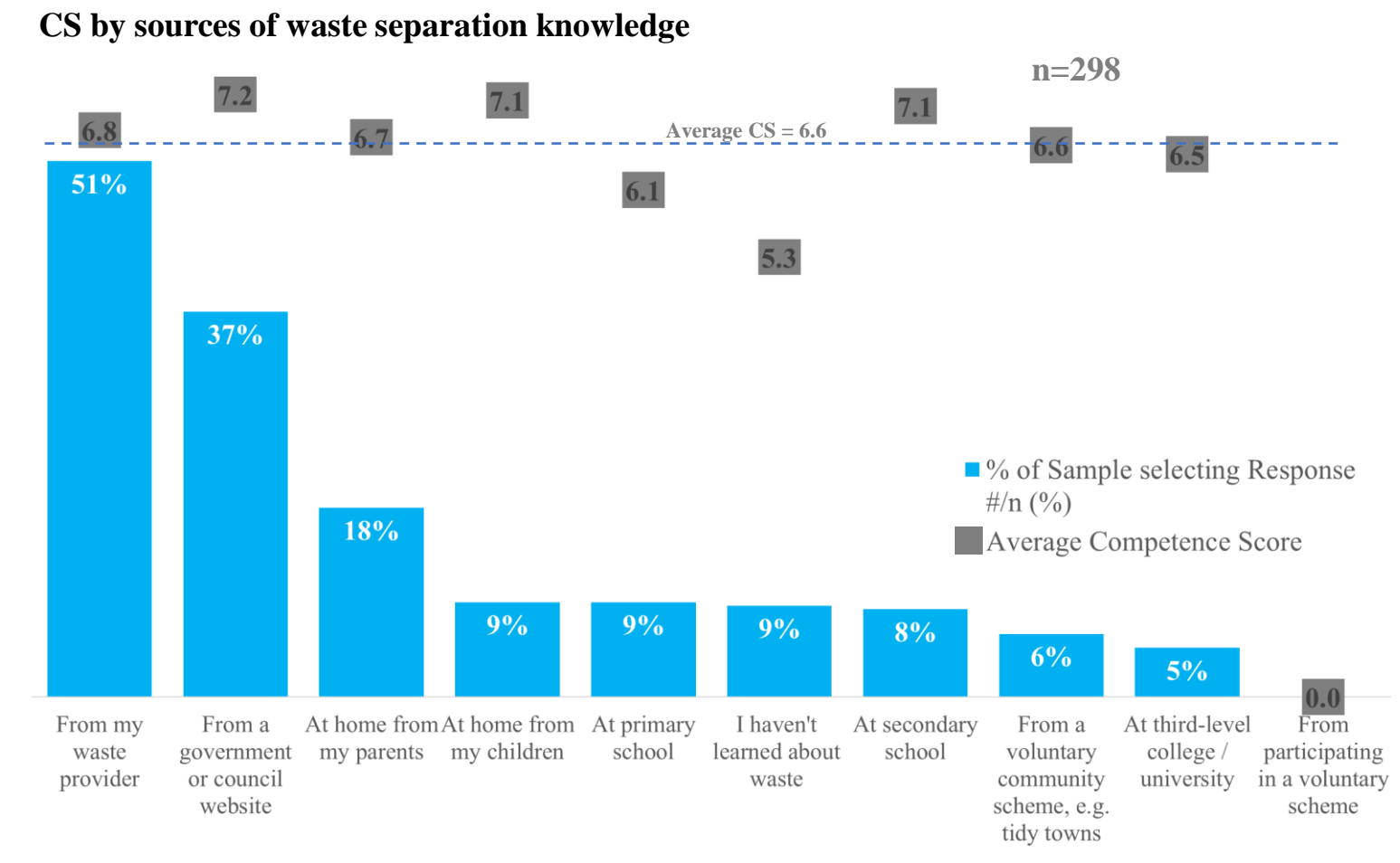
Competence Score - secondary school



Findings – Competence Score – by age band



Findings – future sources of waste separation learning

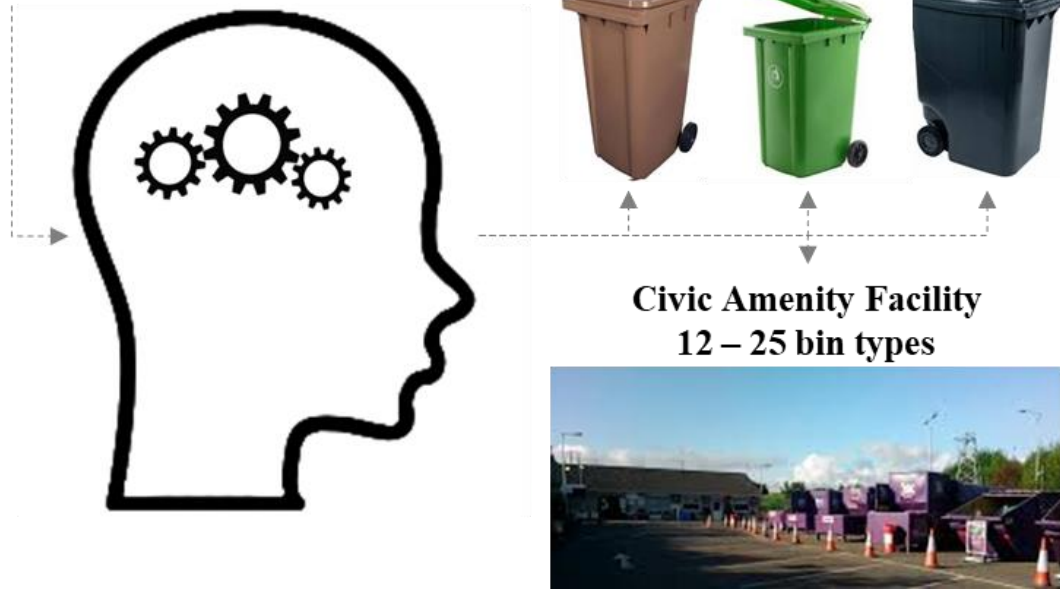


**Expectation from paid service provider to provide details behind service.
Those consulting government websites have highest average competence score.**

Recommendations to resolve complexity for a broad audience

Separation decision tree

229
Types of items



Address complexity in waste separation to simplify processes for users

Standardise waste infrastructure to support consistent marketing of services

Simplify information to facilitate continuous learning & reduce time to digest information

Complement GSP within the curriculum and class-based learning objectives

Ireland's guide to waste

mywaste

Refresh our knowledge annually

Use shopping habits to influence producers

Use election calls to influence your local politicians

Thank you